



LYTX SF-SERIES AND SV2 EVENT PLAYER USER GUIDE

Last Updated: 2019 November 26

The Lytx® SF-Series and SV2 Event Player allows you to download DriveCam® video event clips to your computer and view them outside of the Lytx Account portal. This player allows you to view proprietary DriveCam Video Event (*.DCE) files, which includes the video footage along with event details such as speed, location, and accelerometer readings.

Devices Supported

- SF-Series (ER-SF1, ER-SF64, ER-SF300)
- ER-SV2
- Hub Adapter*

*For Hubs, footage from connected auxiliary cameras may not be viewed simultaneously. You must download a separate DCE file for each camera and view it individually.

To view DCE files from DC3/DC3P or DC2 devices, download the DC3/DC3P player (see below).

System Requirements

Supported: Laptops and desktop computers with Microsoft® Windows® 7 or newer

Not Supported: Apple® Mac OS®, mobile devices

Download Lytx Event Players

Download the Lytx Event Player installation file by going to this address. Event players for SF-Series/SV2 and DC3/DC3P are both available:

www.lytx.com/support#additional-resources

Lytx event players

Download our standalone software programs so you can view video clips outside of your online portal.

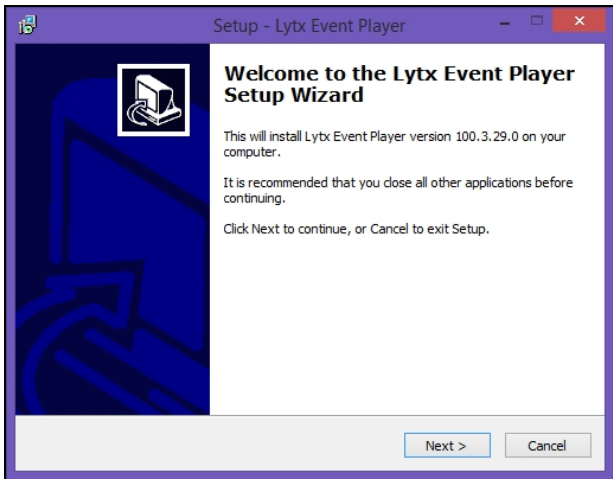
 [Download the SF Series and SV2 player](#)

 [Download the DC3/DC3P player](#)

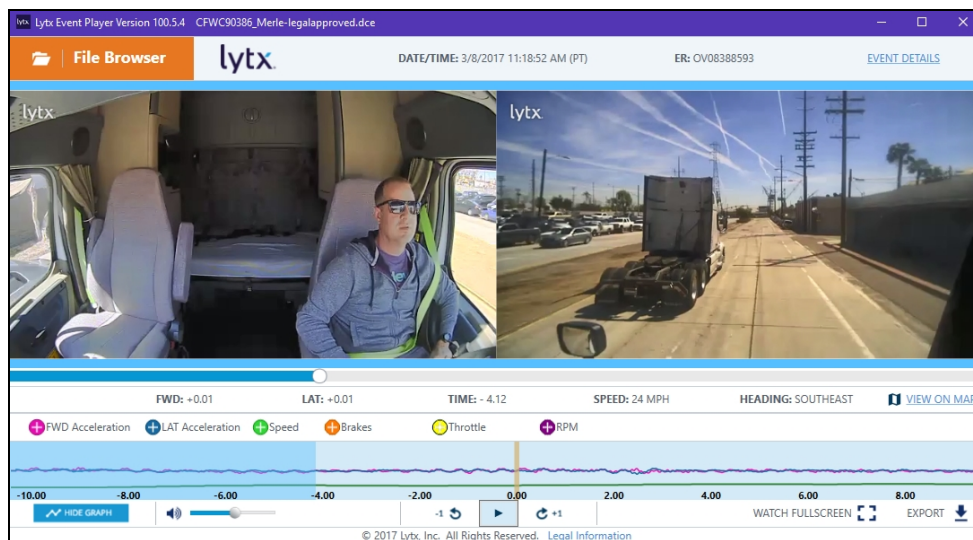


Install the Event Player

To install the player, open the installation file and follow the instructions from the Lytx Event Player Setup Wizard.



After installation, you may view downloaded video event clips using the Lytx SF-Series and SV2 Event Player.



Video Search and MV+AI Inside View Trigger DCE files: These files may not show certain data because it does not apply or is not currently available. This may include triggers, event details, and/or ECM network data.



Frequently Asked Questions (FAQs)

Do I need to use the Lytx Event Player to view events in the DriveCam Online portal?

No. Events may be viewed in the DriveCam Online portal without the Lytx Event Player. This player is needed only to view downloaded .DCE video event clips outside of that portal.

Can I open the downloaded video files with a different program such as Windows Media Player?

Lytx DriveCam Video Event (*.DCE) files are formatted specifically for use with the Lytx Event Player. These include the video footage along with event details such as speed, location, and accelerometer readings. You cannot open these directly with other media player programs.

You may export video event clips into .MP4 format for playback on commonly available video players.

How do I set Lytx Event Player as the default program to open .DCE files?

To set Lytx Event Player as the default program:

1. Download a .DCE file to your computer.
2. Right-click on the file. Select Open With > Choose default program.
3. Browse through your computer to find where the Lytx Event Player was installed. By default, it should be installed in this directory:
C:\Programs\Lytx\Lytx Event Player
4. Select the Lytx Event Player and click Open.

How do I update to the latest version of the Lytx Event Player?

Once the Lytx Event Player is installed, it will automatically prompt you to update if there is a newer version available and your computer is connected to the Internet. This allows you to take advantage of new features as soon as they're released.

I have a DC2 or DC3/DC3P device. Can I view video event clips from this device?

You may not view DC2 or DC3/DC3P video event clips using the Lytx SF-Series and SV2 Event Player.

If you have previously downloaded the old DriveCam® Event Player, you can continue viewing DC2 video event clips with that player. You may also download this from the link above. This is now called the Lytx DC3/DC3P Event Player.

I have the old DriveCam Event Player already. Do I need to use the new Lytx Event Player instead?

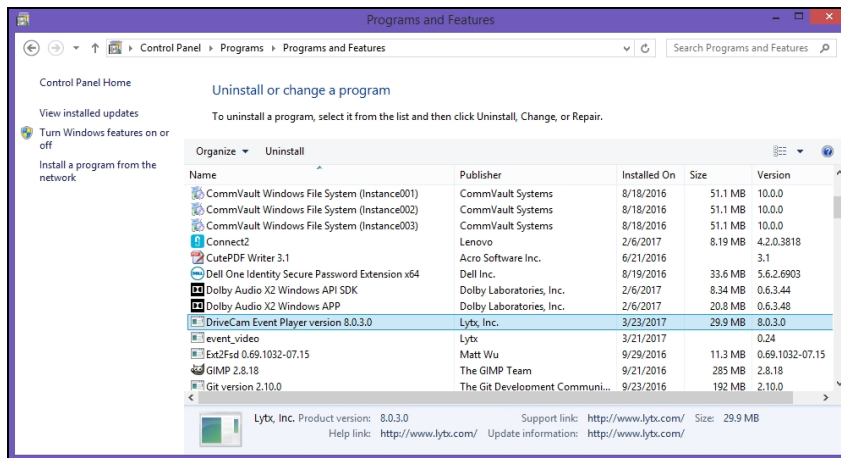
Unless you'd like to view video event clips from DC2 or DC3/DC3P devices, Lytx recommends uninstalling the old DriveCam Event Player then installing the new Lytx Event Player. Using the new Lytx Event Player, you'll be able to take advantage of new features going forward.

If you would like to view video event clips from DC2 or DC3/DC3P devices, you must use the old DriveCam Event Player instead. You may also download this from the link above. This is now called the Lytx DC3/DC3P Event Player.

If I have the old DriveCam Event Player installed, how do I uninstall it?

To uninstall the old DriveCam Event Player:

1. Open your computer's Control Panel. Go to Programs > Programs and Features.
2. Select the DriveCam Event Player. Click Uninstall.



The video isn't playing. What do I do?

To use this event player, Windows Media Player must be enabled on your PC. If the video isn't playing, Windows Media Player may be disabled. This issue has been seen on Windows 8 and Windows 10.

To enable, follow instructions from one or both of these articles.

<https://answers.microsoft.com/en-us/insider/forum/all/windows-media-player-wont-install-from-add-a/50e3f324-e929-45be-b362-b3cf18ef81a8>

<https://support.microsoft.com/en-us/help/14209/get-windows-m>